



Ropeye

PRODUCT
CATALOG

ROPEYE.COM
R/EVOLUTION TECHNOLOGY



Seascape 18 and 27



Pogo 40 Ari Huusela



We Wear Ropeye!

MiniTransat 787



MiniTransat 754



Ropeye™ R/EVOLUTION TECHNOLOGY

Single-point soft-attach padeyes are strong, lightweight, and watertight fastening solutions for mastbase blocks, spinnaker sheet turning blocks, halyard terminals, footblocks, and tie-downs.

Installation requires a single hole drilled through the deck (max thickness 30 mm)



Maffioli DSK78 Ultra spliced to obtain the highest durability

Ropeye Self-Locking Ring to use without block

Through-Deck Pushing to achieve waterproofness and avoid sheaving

50mm dia Carbon Fibre Pad to ensure that the load is spread evenly



Ropeye Single Braid and Double Braid Loops are scientifically and practically tested and proven. The products provide stable quality and maximum durability for heavy loads.



Ropeye



Ropeye Loop™

R/EVOLUTION TECHNOLOGY

Ropeye Basic Loop Sizes

- Pad sandwiches high-strength, low-stretch line in a secure loop
- 50 mm diameter carbon-fiber pad evenly spreads the load
- 80 mm, 60 mm, 40 mm eye lengths

Three strengths with different eye lengths:

- 800 kg/1764 lb MWL
- 1450 kg/3197 lb MWL
- 1950 kg/4299 lb MWL



Ropeye Loop Single Braid UNCOVERED

The material provides significantly improved stability under static loads, combining the typical high strength-to-weight ratio, excellent low stretch, abrasion and UV resistance of Dyneema® fibers.



Ropeye Loop Double Braid COVERED

Dyneema® SK75 cover provides incredible abrasion resistance and lightness, it is a perfect solution in order to prevent damages due to continuous friction.



Ropeye SLR™ SELF-LOCKING RING

Ropeye has two different types of Self-Locking Rings: Low weight made of Zellamide® only for single braid ropes and Aluminium Self-Locking Rings for double braid ropes.

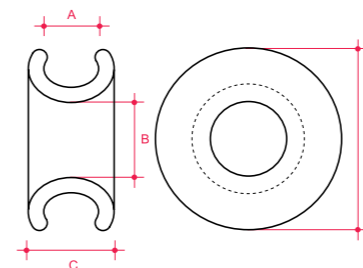
Ropeye Self-Locking Rings are specially designed to lock the rope naturally, inside the ring channel.



Ropeye Self-Locking Ring (SLR)

Product	A	B	C	D
SLR 10-7	7	10	11	24
SLR 14-10	10	14	15	34
SLR 20-14	14	20	20	46

measures in millimetres



Ropeye TDP™ THROUGH-DECK PUSHING

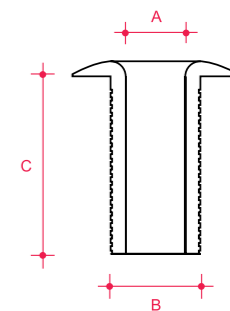
Always use Through-Deck Pushing when installing the Ropeye in order to prevent the rope from wear and friction.



Through-Deck Pushing (TDP)

Product	A	B	C
DTP12	8	12	30
TDP14	10	14	30
TDP16	12	16	30

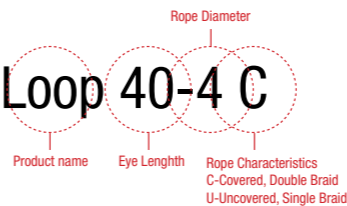
measures in millimetres



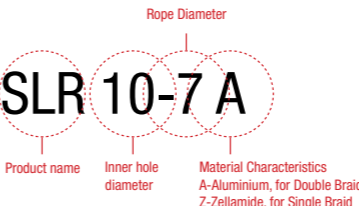


Product Codes/ Characteristics

Ropeye Loop 40-4 C



Ropeye SLR 10-7 A



Ropeye TDP 12



Ropeye Loop Characteristics

U - Uncovered, Single Braid / C - Covered, Double Braid

Product Code	Rope d	Rope d	MWL	MBL	Pad d	TDP
Ropeye Loop 40-4 U/C	4 mm	40 mm	800 kg	1900 kg	50 mm	TDP12
Ropeye Loop 60-4 U/C	4 mm	60 mm	800 kg	1900 kg	50 mm	TDP12
Ropeye Loop 80-4 U/C	4 mm	80 mm	800 kg	1900 kg	50 mm	TDP12
Ropeye Loop 40-5 U/C	5 mm	40 mm	1450 kg	2900 kg	50 mm	TDP14
Ropeye Loop 60-5 U/C	5 mm	60 mm	1450 kg	2900 kg	50 mm	TDP14
Ropeye Loop 80-5 U/C	5 mm	80 mm	1450 kg	2900 kg	50 mm	TDP14
Ropeye Loop 40-6 U/C	6 mm	40 mm	1950 kg	3900 kg	50 mm	TDP16
Ropeye Loop 60-6 U/C	6 mm	60 mm	1950 kg	3900 kg	50 mm	TDP16
Ropeye Loop 80-6 U/C	6 mm	80 mm	1950 kg	3900 kg	50 mm	TDP16
Ropeye Twinline 4 U	4 mm	Adjustable	800 kg	1900 kg	50 mm	TDP12
Ropeye Twinline 5 U	5 mm	Adjustable	1450 kg	2900 kg	50 mm	TDP14
Ropeye Twinline 6 U	6 mm	Adjustable	1950 kg	3900 kg	50 mm	TDP16

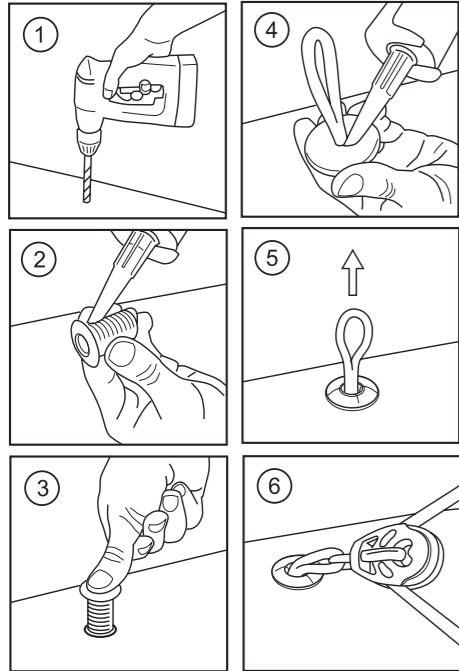
Ropeye SLR Characteristics

A - Aluminium / Z - Zellamid (Only for Single Braid Ropes)

Product Code	Rope d	Inner d	Outer d	Width	MWL	MBL
Ropeye SLR 10-7 A/Z	7 mm	10 mm	24 mm	11 mm	800 kg	1900 kg
Ropeye SLR 14-10 A/Z	10 mm	14 mm	34 mm	15 mm	1450 kg	2900 kg
Ropeye SLR 20-14 A/Z	14 mm	20 mm	46 mm	46 mm	1950 kg	3900 kg

Ropeye Installation

R/EVOLUTION TECHNOLOGY



1. Drill a hole through the deck according to the size of your Ropeye and Through-Deck Pushing (TDP)

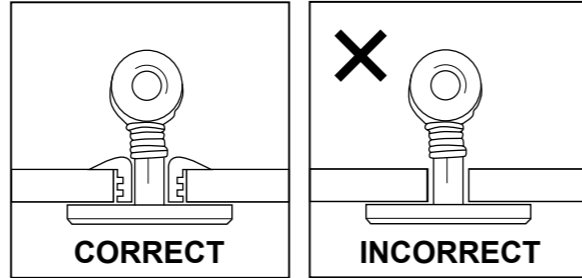
2. Cut off the surplus length of the TDP according to the thickness of the deck. Seal the TDP with Sikaflex

3. Push the TDP into the hole in the deck. Let it dry before installing the Ropeye

4. Seal the Ropeye pad with Silicon or Sikaflex and push it through the hole from inside

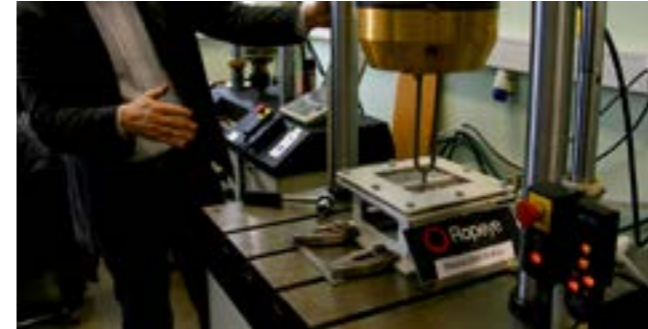
5. Give some tension by pulling the eye of the Ropeye from outside

6. The Ropeye is ready to use



Ropeye Testing

R/EVOLUTION TECHNOLOGY



Revolutionary lightweight hooks and connections for heavy loads. Scientifically and practically tested and proven. The products are tested to provide stable quality and maximum durability for heavy loads.

All tests have been carried out in different loading angles: 0 degrees, 30 degrees and 90 degrees.

